

Aerosystem® and Courtsider® XL

Tennis Lighting Solutions



LSI HAMILTON LIGHTING

offers you two high performance fixtures for your outdoor tennis court lighting needs –

- Glare-free visibility for players and spectators
- Precise light control providing uniform illumination and minimal spillage
- Easy installation and maintenance
- Full-service technical and design assistance



The Courtsider XL Advantage...



The Aerosystem Advantage...

Housing – One-piece aluminum. Corners are welded and finished to produce a clean, sharp appearance while increasing housing strength and ensuring weather-tight construction.

Door Frame – Aluminum, with two captive stainless steel door fasteners to provide secure closure and easy access with no loose hardware.

Lens/Gasket – Tempered flat clear glass lens is sealed to the lens frame with continuous, one-piece EPDM gasket for maximum sealing to housing.

Lamp – 1000 Watt Metal Halide lamp. Horizontal burning position.

Ballast – CWA high-power factor ballast is mounted directly to the housing reinforcing plate.

Reflector – Forward Throw reflector system designed specifically for perimeter lighting applications, eliminating stray light and producing a sharp backside cutoff.

Sockets – Porcelain mogul-base sockets. All sockets are pulse-rated.

Brackets -- Consult Factory

Housing – One-piece, multi-radiused, die-cast aluminum. Aerodynamic shape creates less wind loading requirement for pole.

Door Frame – One-piece, die-cast aluminum door frame secures to the housing with two internal hinges. Two stainless steel captive door fasteners allow easy access and door frame may be removed without tools. A one-piece extruded silicone gasket seals the door frame against the housing. Standard housing/door seal design prevents external contaminants from entering the Aerosystem resulting in an IP65 rating.

Lens/Gasket – Tempered flat clear glass lens is sealed to the door frame with one-piece extruded silicone gasket.

Lamp – 1000 Watt Metal Halide Reduced Envelope lamp. Horizontal burning position.

Ballast – CWA high-power factor ballast is mounted on hinged removable ballast tray. Toolless release mechanism for hassle-free operation.

Reflector – Forward Throw reflector system designed to light the court area uniformly while eliminating stray light and producing a sharp backside cutoff.

Sockets – Porcelain mogul-base sockets, factory prewired with a disconnect plug for the ballast. All sockets are pulse-rated.

Brackets -- Consult Factory



Courtsider XL and Aerosystem are full cutoff, making them community friendly.

GREAT PERFORMANCE DESERVES TO BE SEEN

Pole & Fixture Placement

Installing the Courtsider or Aerosystem courtside removes the light source from the player's normal line of vision. This placement provides excellent illumination on the flight of the tennis ball, and the surface of the court. In general, proper lighting of the ball requires pole placement on the sides of the court which are near, or behind the baseline of the court. (see standard layouts)

Fixture

The Forward Throw reflector and concealed light source provide a sharp cutoff to prevent disabling glare and unwanted spill light. The Metal Halide lamp source promotes energy efficiency and longer life. This combination insures economic operation and minimal maintenance costs.

Fixture Mounting Height

At a mounting height of 6-8 metres, the Courtsider and Aerosystem effectively distribute light onto the court and eliminate stray light to surrounding areas. The low fixture mounting height is more visually appealing, and provides easier accessibility for relamping. Lob shots over 6-8 metres are illuminated by the light reflected from the court surface.

Quantity of Light

A rapidly moving tennis ball requires relatively high levels of illumination, and will vary according to the caliber of play at the facility. Each system uses the proper number of poles and fixtures to produce the proper amount of light for the level of play.

Uniformity of Light

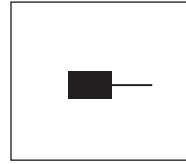
The tennis ball is easier to follow under uniform lighting conditions. The optical design and pole/fixture placement of both fixtures insure an even light distribution over the entire court area.

Customised Lighting Design

A customised layout design, illustrating the lux-levels achieved utilizing either Courtsider XL or Aerosystem fixtures for your project, is available upon request.

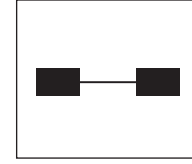


Configurations



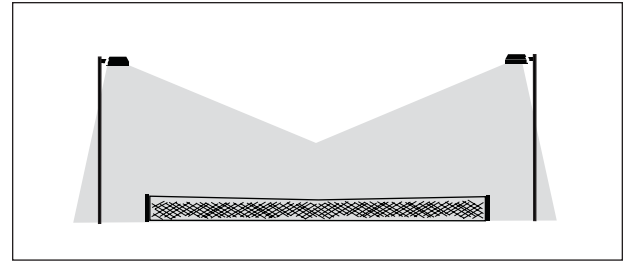
Single

ARO-A or CXLS-A Assembly
(1) 1000 Watt Fixture
(1) 7m x 100mm sq. section pole



D180

ARO-B or CXLS-B Assembly
(2) 1000 Watt Fixtures
(1) 7m x 100mm sq. section pole

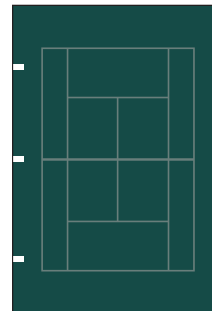


**Extreme Cut-off
Controlled Light Distribution**

Standard Layouts

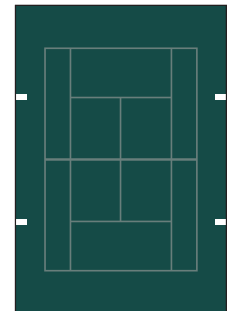
LSI Hamilton Lighting can provide full compliance with Australian Standards AS2560.1-2002 and AS 2560.2.1-2003 which detail the lighting requirements for outdoor tennis.

LAYOUT 1



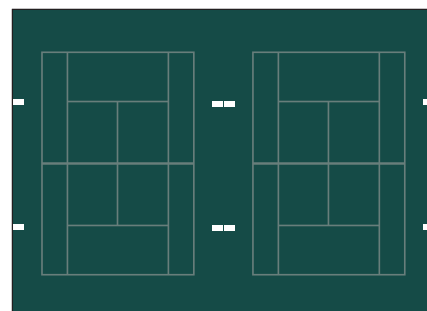
(6) ARO-A or
(6) CXLS-A

LAYOUT 2



(4) ARO-A or
(4) CXLS-A

LAYOUT 3



(4) ARO-A or (4) CXLS-A
(2) ARO-B or (2) CXLS-B



Deagan Tennis
Brisbane, Australia



Wynnum Tennis Club
Brisbane, Australia



2/12 Billabong Street
Stafford, Brisbane, Queensland 4053
Phone 61 7 3356 4042 FAX 61 7 3356 5958

216 Jellico Street
Te Puke, New Zealand
Phone 64 7 544 7402 FAX 64 7 544 7405

www.lsi-hamilton.com.au